



Peripheral Iridotomy

Peripheral Iridotomy is the standard first-line treatment in closed-angle glaucoma and eyes that are at risk for this condition.

A laser is used to make a tiny opening in the iris to allow fluid to flow from behind the iris to outflow channels. No external opening to the eye is made, just a small internal bypass.

This procedure preserves vision and prevents glaucoma damage by lowering eye pressure and the potential for damage to the optic nerve. This laser treatment has been performed since the early 1980s and takes between 5 and 10 minutes to complete.

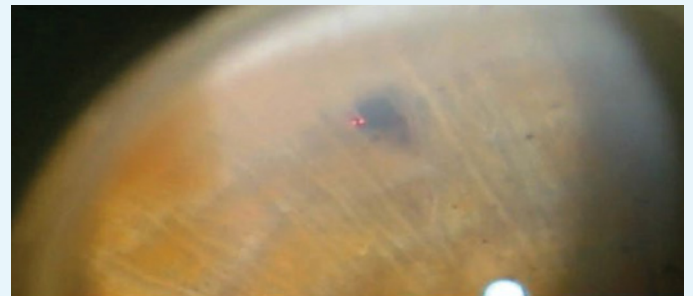
SCOPE EXPANSION

Limited Laser and Superficial Skin Procedures

Peripheral Iridotomy (PI)



Typical laser PI set-up for the optometrist and patient.



Opening created in the iris to allow fluid to drain more easily which lowers eye pressure.

Images courtesy of NSU College of Optometry